



Hallmark of innovation

Vimicell™

Highly Bio-available Minerals and Yeast for Ruminants

VIMICELL™

Highly Bio-available Minerals and Yeast for Ruminants

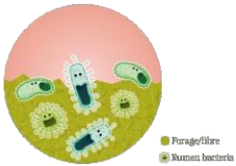
Trace minerals though required in minute quantities are very essential for the performance and maintenance of dairy cattle. They act as co-factors for enzymes which are important for immunity of an animal.



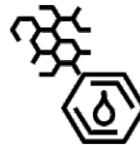
MINERAL DEFICIENCY IN ANIMALS LEADS TO



Vimicell™ is first of its kind organic and inorganic trace minerals mixture for Dairy cattle.



Inorganic form of trace mineral ensure the requirement of rumen microbes for their growth and metabolism

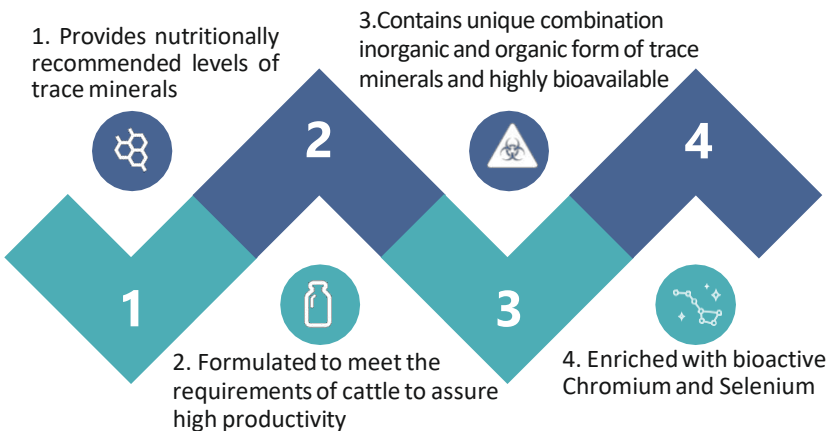


Organic portion of trace mineral enhances the bioavailability and performance of Dairy animals by increased post ruminal availability.

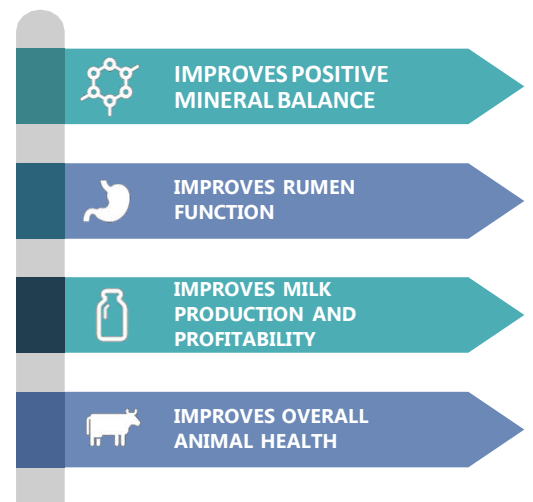
COMPOSITION

Vimicell™ contains all the required trace minerals such as Iron, Copper, Zinc, Manganese, Iodine, Cobalt, Chromium and Selenium along with the Macro minerals Calcium, Phosphorus and Magnesium in combination with yeast and flavour for ruminants.

FEATURES



BENEFITS



RECOMMENDATION

1-2kg / ton of feed

PRESENTATION

1kg & 25kg Bag

NEWGEN BIOSCIENCE PVT.LTD.,

Rs. No. :2, Kurumbapet Industrial Estate, Puducherry - 605009. INDIA.

+91 9994444012 | newgenbioscience@gmail.com | www.newgenbioscience.com